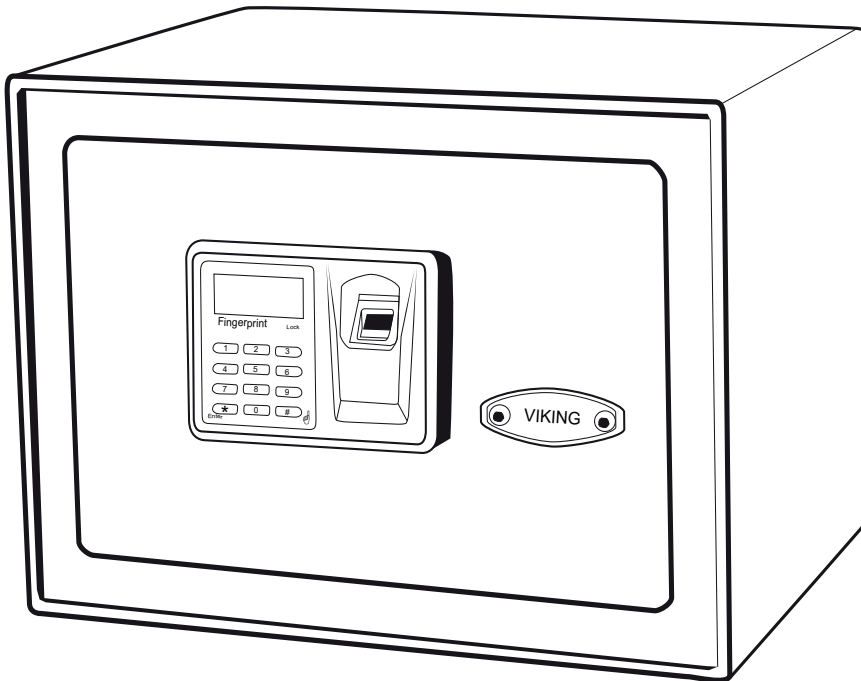




VIKING SECURITY SAFE

## BIOMETRIC FINGERPRINT - LCD - KEYPAD SAFE



VS-12BL WALL SAFE  
VS-14BL TOP OPENING DRAWER SAFE  
VS-20BLX MINI  
VS-25BL  
VS-25DBL SMALL DEPOSITORY SAFE  
VS-35BL  
VS-38BL EXTRA WIDE LAPTOP SAFE  
VS-50BL LARGE  
VS-52BL HIDDEN WALL SAFE  
VS-52BLX HIDDEN WALL SAFE LASER CUT

<b>Body Material</b>	Steel
<b>Can be open by</b>	Fingerprint / PIN code / Key
<b>Optical Sensor</b>	500 DPI, opens in fraction of a second
<b>Fingerprint Entry</b>	Stores up to 32 fingerprints,
<b>Memory</b>	Non-volatile memory - stored information is retained if batteries are removed.
<b>Key Pad Entry</b>	Opens with 4-8 digits PIN code
<b>Locking System</b>	Motorized door, deadbolt lock
<b>High Security Keys</b>	4 prong cross keys. Two included.
<b>LCD display</b>	Battery Level indicator, Data Count indicator, OK and Error indicator, etc.
<b>Sounds Mode</b>	On and OFF operational sounds
<b>Warning sound</b>	Safe starts beeping if door is left unlocked for more than 1 minute.
<b>Time Out</b>	Operation is put on HOLD for 2 minutes if multiple incorrect PIN or fingerprints are input
<b>LED light</b>	Build in LED light operates independently with 2 AA batteries
<b>Warranty</b>	One-Year Limited Warranty
<b>Batteries</b>	4 AA
<b>Included Accessories</b>	Mounting hardware and batteries
<b>Fireproof</b>	No
<b>Door Thickness</b>	5 mm
<b>Body Thickness</b>	2 mm

**DISCLAIMER:** Not recommend for age groups 55 and above. Due to thinning fingerprints ALL fingerprint readers will lose accuracy with increasing age.

# VIKING SECURITY SAFE

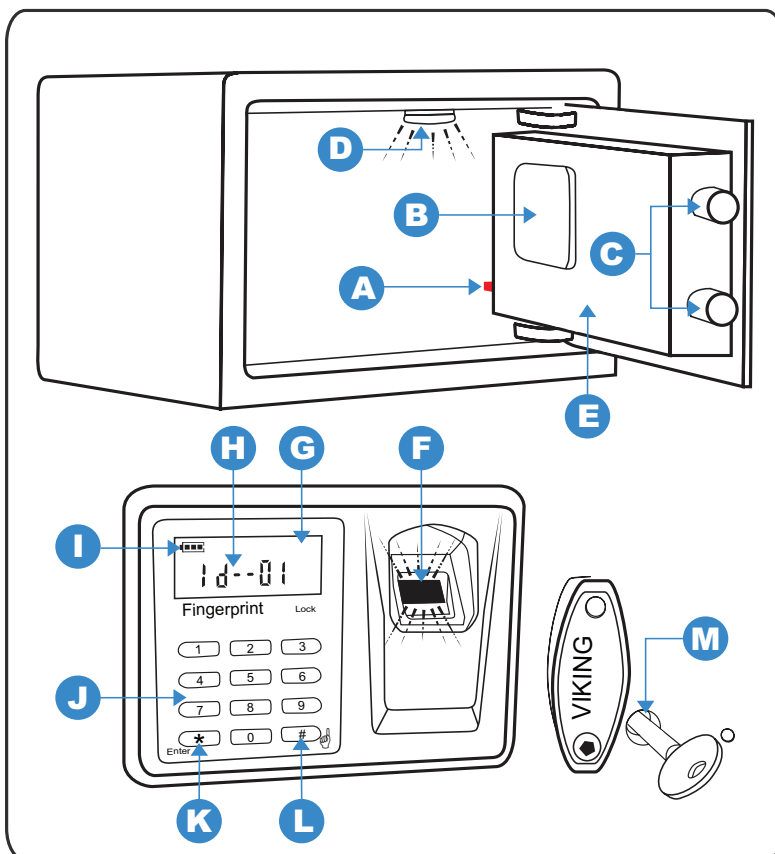
## USER'S MANUAL

### IMPORTANT

- **In default mode fingerprint function is disabled and safe can be unlocked ONLY with PIN code or key. To activate fingerprint function, register at least one fingerprint.**
- **If safe is reset to factory default mode, only default PIN code can open the safe.**
- When using fingerprint reader to unlock the safe, please register the same fingerprint in multiple positions.
- Remember to register new PIN code, so safe can no longer be open with factory default PIN "1234"
- Test with default PIN code. If safe opens, the safe is still in factory default mode.
- Operational sounds can be switched ON and OFF. However, Warning Beep sounds if safe is left UNLOCKED for longer than 1 minute.
- If the safe is in lock state, locking bars sticking out, Red Button (A) is NOT functional. You cannot erase fingerprint data, program the safe nor do any operation.
- Time Out Period locks the safe for 2 minutes if multiple incorrect PIN codes or fingerprints are input. LCD displays "HOLD-Err".
- Test the keys and store them in a secure place, NOT inside of the safe.
- When the screen shows "□", please change the battery. All registered fingerprints and PIN will be saved.

**DISCLAIMER:** Not recommend for age groups 55 and above. Due to thinning fingerprints ALL fingerprint readers will lose accuracy with increasing age.

### GENERAL DESCRIPTION



- A** Initialization/Reset Red Button
- B** Battery Compartment
- C** Locking Bars
- D** LED light
- E** Motorized Door
- F** Fingerprint Scanner
- G** LCD display
- H** Data Count Indicator
- I** Battery Indicator
- J** Key Pad
- K** Star Button (\*)
- L** Pre-Scan Pound Button (#)
- M** Logo Plate and Key Access

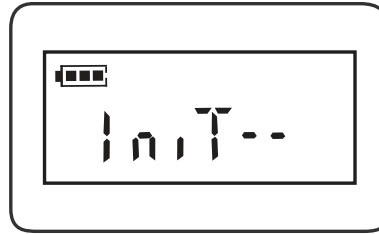
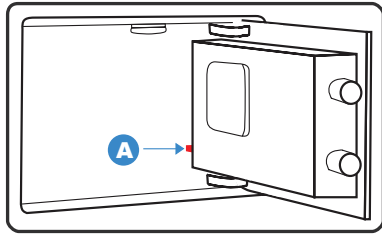


### 1. BEFORE FIRST USE

- 1.1. Unlock the safe with key. Keyhole is located under the Logo Plate. Remove using Allen Key.
- 1.2. Install 4 AA batteries in battery compartment **B**.
- 1.3. Install 2 AA batteries in LED light **D** (see point 9 for instructions).

## 2. HOW TO RESET SAFE TO FACTORY DEFAULT SETTINGS

2.1. PRESS and HOLD down red button **A** for 10 seconds. "INIT" flashes on LCD display followed by "OK". Safe is reset to Factory Default. All data is deleted and you can begin new registration when red light comes on.



## 3. HOW TO CHANGE PIN CODE ON KEYPAD

### Step 1:

Punch in the default PIN 1234 and HOLD the star (\*) until the underscore ( \_ ) shows up (1-2 seconds).

### Step 2:

Punch in your Unique PIN Code and star (\*).  
DO NOT HOLD the star (\*).

### Step 3:

Punch in your Unique PIN Code and star (\*) for the Second time.  
DO NOT HOLD the star (\*).

**Note:** After you enter your Unique PIN and star (\*) twice in a row the New PIN Code is confirmed by OK sign on the screen. Only your Chosen Registered PIN Code will be working.

### Step 4: TEST

Punch in the old PIN Code 1234 and star (\*) it should give you ERR – Error.  
Punch in your Unique PIN Code and star (\*). The safe should unlock.

### Note:

1. Should you need to change a Registered PIN Code to another PIN Code: follow the same steps using your Unique Registered PIN Code instead of the Default PIN Code.
2. If you rebooted the safe by holding down the Red Button **A** for 10 seconds: your safe goes to Default Mode. All data, including the Registered PIN Code, will be deleted. The safe will open with the Default PIN Code 1234 and star (\*). To change it to your Unique PIN Code again, follow the steps above.

## 4. HOW TO REGISTER FINGERPRINTS ON FINGERPRINT SCANNER

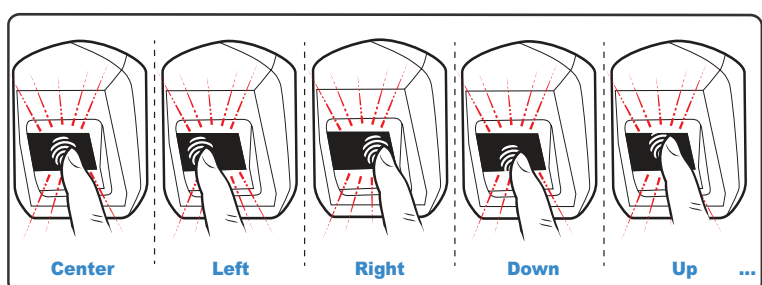
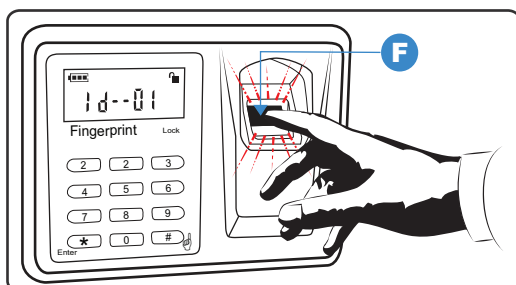
4.1. To register fingerprints PRESS BRIEFLY red button **A**. As soon as red light comes on, press your fingerprint on the Glass Fingerprint Scanner **F**. LCD screen will display "OK", battery indicator and data count indicator "1d-01".

4.2. If the registration fails "Err" will be displayed on LCD screen. Register the same finger again by repeating Step 4.1.

4.3. Repeat Step 4.1 with the same fingerprint but change fingerprint position on the Glass Fingerprint Scanner - left, right, up, down, to the side.

**Note:** The more times and various positions you program one fingerprint the more likely it is to open in an emergency.

4.4. To register a completely different fingerprint, repeat Step 4.1.



## 5. HOW TO UNLOCK AND LOCK THE SAFE WITH YOUR FINGERPRINT

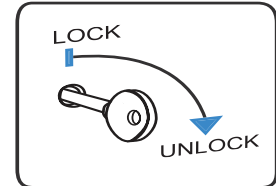
- 5.1. UNLOCK: Press pound button (#). When red light comes on, press a registered fingerprint on the Glass Fingerprint Scanner. Battery indicator and data count indicator "1d - -01" will display on LCD screen. Safe is Unlocked.
- 5.2. LOCK: Press either star button (\*) or pound button (#).

## 6. HOW TO UNLOCK AND LOCK THE SAFE WITH PIN CODE

- 6.1. UNLOCK: Punch in a registered PIN code and press star button (\*).
- 6.2. LOCK: Press either star button (\*) or pound button (#).

## 7. HOW TO UNLOCK AND LOCK THE SAFE WITH A KEY

- 7.1. Insert the key in the keyhole and rotate to the right/clockwise to unlock



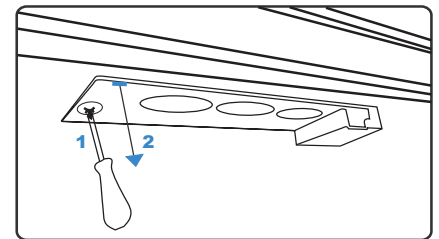
## 8. HOW TO TURN SOUNDS ON/OFF

- 8.1. SOUNDS ON: Press 1 & (\*) star button, you will hear a long beep, sound is on.
- 8.2. SOUNDS OFF: Press 0 & (\*) star button, the sound is off.

## 9. HOW TO INSTALL/CHANGE BATTERIES ON LED LIGHT

- 9.1. Unscrew the little screw. Carefully pull down the LED light on the screw side on the left. Put 2 fresh AA batteries on the back of the light. Put Back the LED light starting on the right side of the LED light first.

**Note:** 2 AA batteries are provided and have to be installed.



## MOUNTING INSTRUCTIONS

**It is recommended to bolt down the safe.**

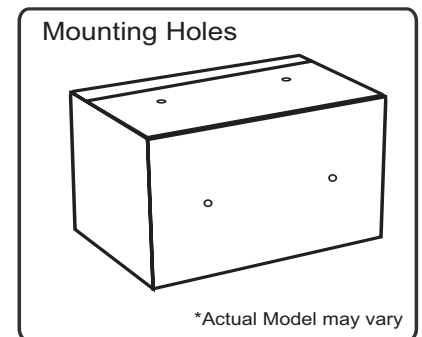
**Note:** The safe may be mounted to a wall or floor. Be aware of the load bearing. Failure to do so can result in personal injury and/or damage to property. Use appropriate tools when performing work and always use eye protection

### • Wall Mounting

- Do not mount the safe without anchoring to the wall
- Find the studs in the wall, at your desired location. Most studs are 16 inches or 24 inches apart
- Check the wall for concealed wires or pipes
- Measure the location of the pre-set drill holes; mark their exact position onto the wall ensuring that the studs or anything else behind will not interfere
- Drill the appropriate size holes for the anchors you are using
- Carefully press the anchor into the holes at this time
- Mount the safe by running screws from inside of the safe and securing to anchors; ensure the safe is mounted securely.

### • Floor Mounting

- Use proper drill tools depending on the type of floor you are mounting the safe (wood, tile, or concrete)
- Measure the location of the pre-set drill holes; mark their exact position onto the floor
- Drill the appropriate size holes for the anchors you are using
- Carefully press the anchor into the holes at this time
- Mount the safe by running screws from inside of the safe and securing to anchors; ensure the safe is mounted securely.



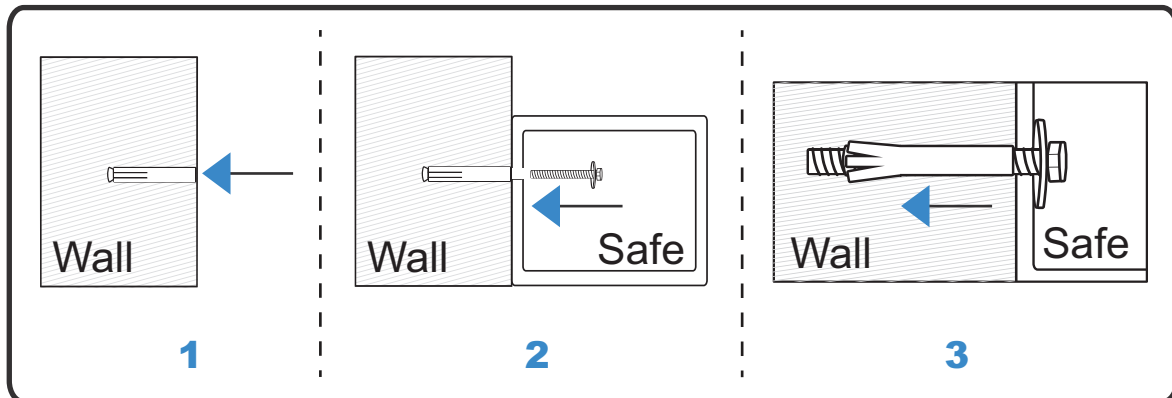
## WARNING

**Never store firearms and ammunition together. The safest protection against accidents involving children is to store your firearm unloaded in an approved Firearm Safety Lock Box, with ammunition stored separately.**

## MOUNTING METHOD

**Fix the safe in the place which is not easy to move.**

- Drill holes for expansion bolts (or clamping screws) in the right place.
- Turn the expansion bolts counterclockwise to separate.
- Use the expansion bolts (or clamping screws) to secure the safe to the wall.
- Make sure the safe is mounted in place as required and then tighten all screws.



## CAUTION

Use the expansion bolt when there is a concrete wall surface. Use the clamping screw when there is a wooden wall surface.

## CARE AND MAINTENANCE

**To maximize the security and performance of the safe, keep Glass Fingerprint Scanner **F** clean**

- Use a dry cloth to remove any smudges or prints off the Fingerprint Scanner after use
- Use gentle cleaning agents to clean the safe and Glass Fingerprint Scanner
- Test registered fingerprints and PIN code every 6 months
- Keep liquids away from the control panel. Spills on the control panel will cause damage and possibly electric shock
- Secure safe in a proper area to prevent from falling and causing damage or injury
- DO NOT disassemble the product. For all repairs, contact Viking Security Safe Customer Service



VIKING SECURITY SAFE