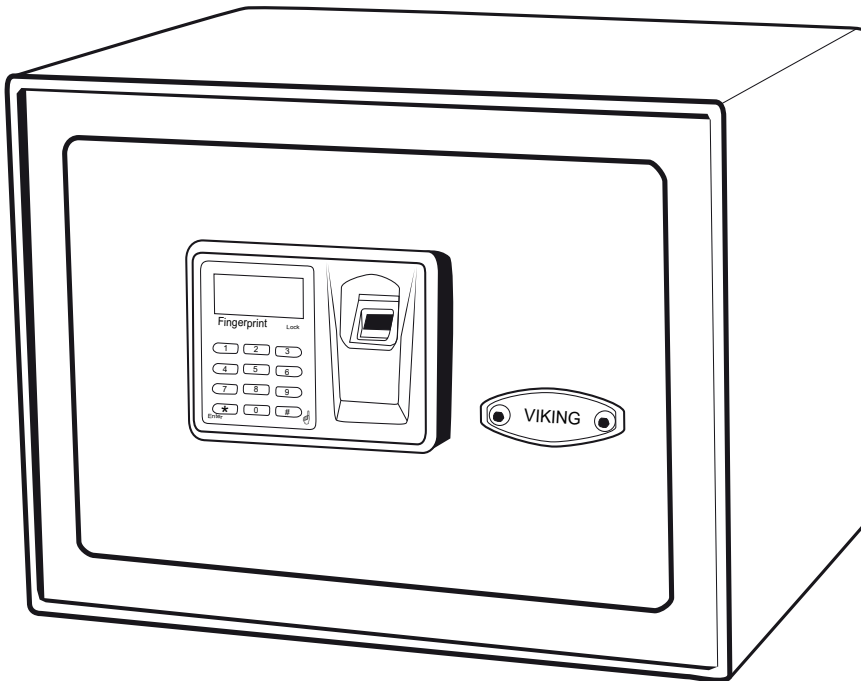




VIKING SECURITY SAFE

BIOMETRIC FINGERPRINT - LCD - KEYPAD SAFE



VS-12BL WALL SAFE
VS-14BL TOP OPENING DRAWER SAFE
VS-20BLX MINI
VS-25BL
VS-25DBLX (VS-25DBL)* SMALL DEPOSITORY SAFE
VS-35BLX (VS-35BL)*
VS-38BLX (VS-38BL)* EXTRA WIDE LAPTOP SAFE
VS-50BL LARGE
VS-52BLR (VS-52BL)* HIDDEN WALL SAFE
VS-52BLX HIDDEN WALL SAFE LASER CUT

** Models may change name with improvements and modifications*

Body Material	Steel
Can be open by	Fingerprint / PIN code / Key
Optical Sensor	500 DPI, opens in fraction of a second
Fingerprint Entry	Stores up to 32 fingerprints,
Memory	Non-volatile memory - stored information is retained if batteries are removed.
Key Pad Entry	Opens with 4-8 digits PIN code
Locking System	Motorized door, deadbolt lock
High Security Keys	4 prong cross keys. Two included.
LCD display	Battery Level indicator, Data Count indicator, OK and Error indicator, etc.
Sounds Mode	On and OFF operational sounds
Warning sound	Safe starts beeping if door is left unlocked for more than 1 minute.
Time Out	Operation is put on HOLD for 2 minutes if multiple incorrect PIN or fingerprints are input
LED light	Build in LED light operates independently with 2 AA batteries
Warranty	One-Year Limited Warranty
Batteries	4 AA
Included Accessories	Mounting hardware and batteries
Fireproof	No
Door Thickness	5 mm
Body Thickness	2 mm

DISCLAIMER: Not recommend for age groups 55 and above. Due to thinning fingerprints ALL fingerprint readers will lose accuracy with increasing age.

VIKING SECURITY SAFE

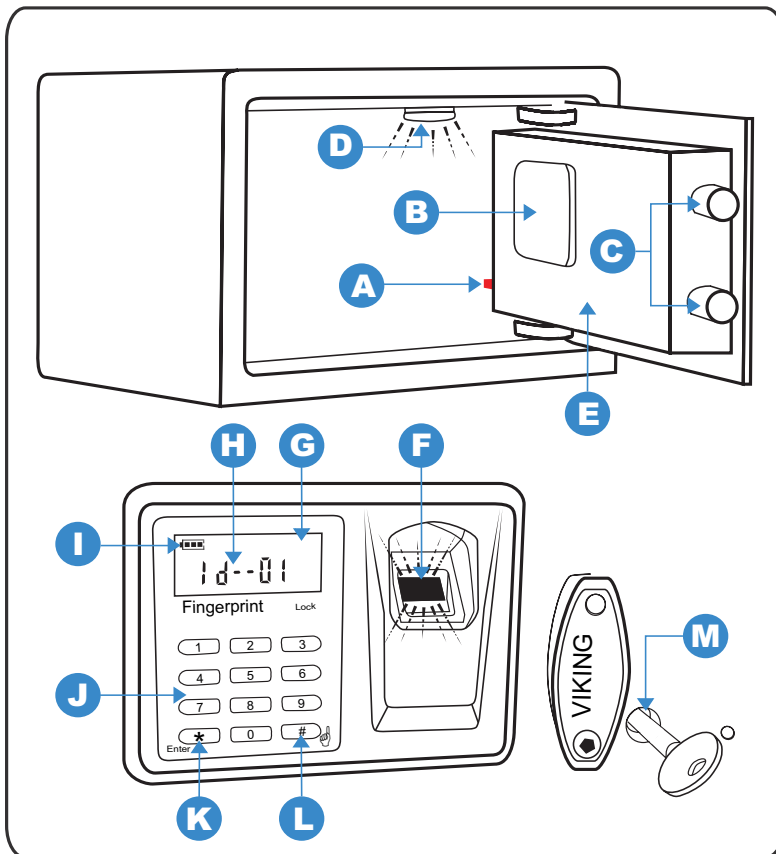
USER'S MANUAL

IMPORTANT - READ FIRST

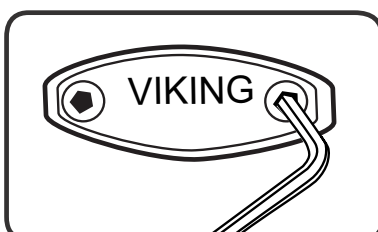
- In default mode fingerprint function is disabled and safe can be unlocked ONLY with PIN code or key. To activate fingerprint function, register at least one fingerprint.
- If safe is reset to factory default mode, only default PIN code can open the safe.
- When using fingerprint reader to unlock the safe, please register the same fingerprint in multiple positions.
- Remember to register new PIN code, so safe can no longer be open with factory default PIN "1234"
- Test with default PIN code. If safe opens, the safe is still in factory default mode.
- Operational sounds can be switched ON and OFF. However, Warning Beep sounds if safe is left UNLOCKED for longer than 1 minute.
- If the safe is in lock position and locking bars stick out, ALL functions of the safe will be disabled and Red Button (A) will NOT function.
- Time Out Period locks the safe for 2 minutes if multiple incorrect PIN codes or fingerprints are input. LCD displays "HOLD-Err".
- Test the keys and store them in a secure place, NOT inside of the safe.
- When the screen shows "□", please change the battery. All registered fingerprints and PIN will be saved.
- When changing batteries, make sure the safe is in LOCKED position.

DISCLAIMER: Not recommend for age groups 55 and above. Due to thinning fingerprints ALL fingerprint readers will lose accuracy with increasing age.

GENERAL DESCRIPTION



A	Initialization/Reset Red Button
B	Battery Compartment
C	Locking Bars
D	LED light
E	Motorized Door
F	Fingerprint Scanner
G	LCD display
H	Data Count Indicator
I	Battery Indicator
J	Key Pad
K	Star Button (*)
L	Pre-Scan Pound Button (#)
M	Logo Plate and Key Access

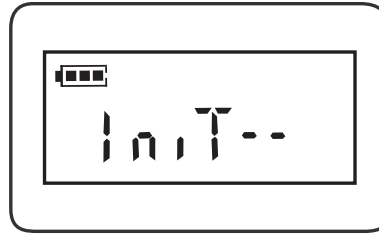
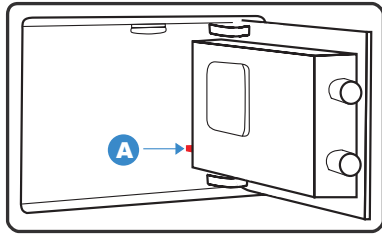


1. BEFORE FIRST USE

- 1.1. Unlock the safe with key. Keyhole is located under the Logo Plate. Remove using Allen Key.
- 1.2. Install 4 AA batteries in battery compartment **B**.
- 1.3. Install 2 AA batteries in LED light **D** (see point 9 for instructions).

2. HOW TO RESET SAFE TO FACTORY DEFAULT SETTINGS

2.1. PRESS and HOLD down red button **A** for 10 seconds. "INIT" flashes on LCD display followed by "OK". Safe is reset to Factory Default. All data is deleted and you can begin new registration when red light comes on.



3. HOW TO CHANGE PIN CODE ON KEYPAD

Step 1:

Punch in the default PIN 1234 and HOLD the star (*) until the underscore (_) shows up (1-2 seconds).

Step 2:

Punch in your Unique PIN Code and star (*).
DO NOT HOLD the star (*).

Step 3:

Punch in your Unique PIN Code and star (*) for the Second time.
DO NOT HOLD the star (*).

Note: After you enter your Unique PIN and star (*) twice in a row the New PIN Code is confirmed by OK sign on the screen. Only your Chosen Registered PIN Code will be working.

Step 4: TEST

Punch in the old PIN Code 1234 and star (*) it should give you ERR – Error.
Punch in your Unique PIN Code and star (*). The safe should unlock.

Note:

1. Should you need to change a Registered PIN Code to another PIN Code: follow the same steps using your Unique Registered PIN Code instead of the Default PIN Code.
2. If you rebooted the safe by holding down the Red Button **A** for 10 seconds: your safe goes to Default Mode. All data, including the Registered PIN Code, will be deleted. The safe will open with the Default PIN Code 1234 and star (*). To change it to your Unique PIN Code again, follow the steps above.

4. HOW TO REGISTER FINGERPRINTS ON FINGERPRINT SCANNER

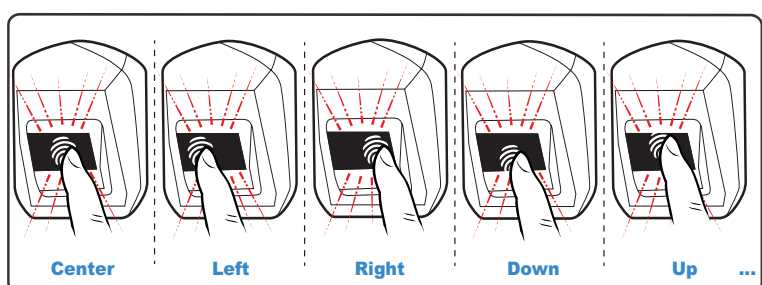
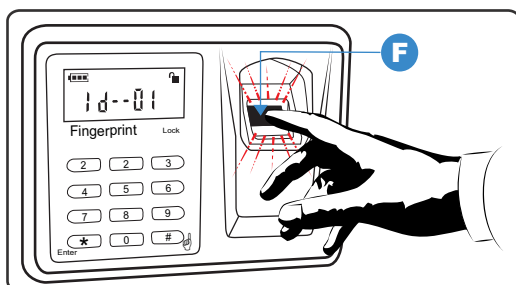
4.1. To register fingerprints PRESS BRIEFLY red button **A**. As soon as red light comes on, press your fingerprint on the Glass Fingerprint Scanner **F**. LCD screen will display "OK", battery indicator and data count indicator "1d-01".

4.2. If the registration fails "Err" will be displayed on LCD screen. Register the same finger again by repeating Step 4.1.

4.3. Repeat Step 4.1 with the same fingerprint but change fingerprint position on the Glass Fingerprint Scanner - left, right, up, down, to the side.

Note: The more times and various positions you program one fingerprint the more likely it is to open in an emergency.

4.4. To register a completely different fingerprint, repeat Step 4.1.



5. HOW TO UNLOCK AND LOCK THE SAFE WITH YOUR FINGERPRINT

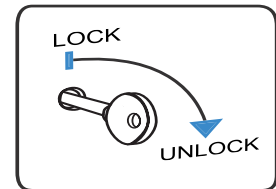
- 5.1. UNLOCK: Press pound button (#). When red light comes on, press a registered fingerprint on the Glass Fingerprint Scanner. Battery indicator and data count indicator "1d - -01" will display on LCD screen. Safe is Unlocked.
- 5.2. LOCK: Press either star button (*) or pound button (#).

6. HOW TO UNLOCK AND LOCK THE SAFE WITH PIN CODE

- 6.1. UNLOCK: Punch in a registered PIN code and press star button (*).
- 6.2. LOCK: Press either star button (*) or pound button (#).

7. HOW TO UNLOCK AND LOCK THE SAFE WITH A KEY

- 7.1. Insert the key in the keyhole and rotate to the right/clockwise to unlock



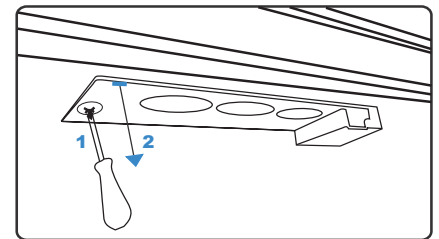
8. HOW TO TURN SOUNDS ON/OFF

- 8.1. SOUNDS ON: Press 1 & (*) star button, you will hear a long beep, sound is on.
- 8.2. SOUNDS OFF: Press 0 & (*) star button, the sound is off.

9. HOW TO INSTALL/CHANGE BATTERIES ON LED LIGHT

- 9.1. Unscrew the little screw. Carefully pull down the LED light on the screw side on the left. Put 2 fresh AA batteries on the back of the light. Put Back the LED light starting on the right side of the LED light first.

Note: 2 AA batteries are provided and have to be installed.



MOUNTING INSTRUCTIONS

It is recommended to bolt down the safe.

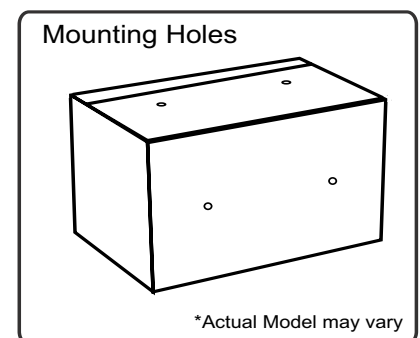
Note: The safe may be mounted to a wall or floor. Be aware of the load bearing. Failure to do so can result in personal injury and/or damage to property. Use appropriate tools when performing work and always use eye protection

• Wall Mounting

- Do not mount the safe without anchoring to the wall
- Find the studs in the wall, at your desired location. Most studs are 16 inches or 24 inches apart
- Check the wall for concealed wires or pipes
- Measure the location of the pre-set drill holes; mark their exact position onto the wall ensuring that the studs or anything else behind will not interfere
- Drill the appropriate size holes for the anchors you are using
- Carefully press the anchor into the holes at this time
- Mount the safe by running screws from inside of the safe and securing to anchors; ensure the safe is mounted securely.

• Floor Mounting

- Use proper drill tools depending on the type of floor you are mounting the safe (wood, tile, or concrete)
- Measure the location of the pre-set drill holes; mark their exact position onto the floor
- Drill the appropriate size holes for the anchors you are using
- Carefully press the anchor into the holes at this time
- Mount the safe by running screws from inside of the safe and securing to anchors; ensure the safe is mounted securely.



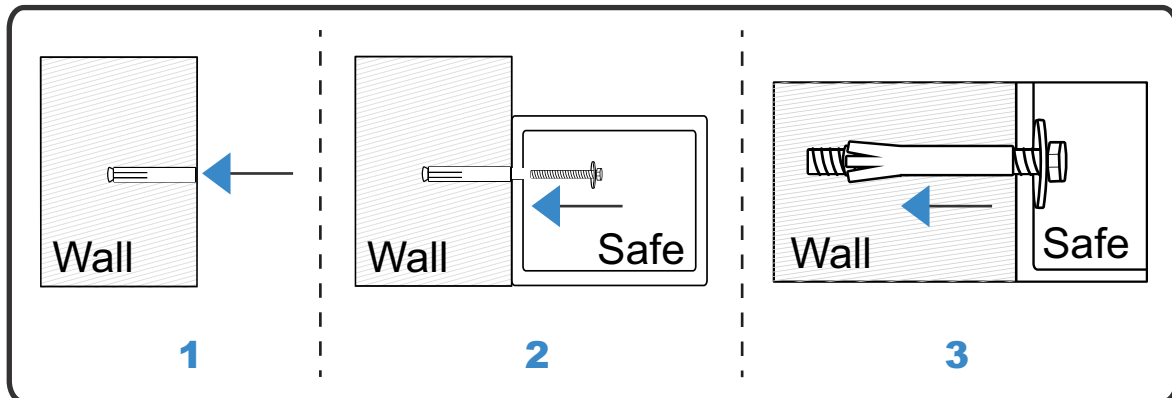
WARNING

Never store firearms and ammunition together. The safest protection against accidents involving children is to store your firearm unloaded in an approved Firearm Safety Lock Box, with ammunition stored separately.

MOUNTING METHOD

Fix the safe in the place which is not easy to move.

- Drill holes for expansion bolts (or clamping screws) in the right place.
- Turn the expansion bolts counterclockwise to separate.
- Use the expansion bolts (or clamping screws) to secure the safe to the wall.
- Make sure the safe is mounted in place as required and then tighten all screws.



CAUTION

Use the expansion bolt when there is a concrete wall surface. Use the clamping screw when there is a wooden wall surface.

CARE AND MAINTENANCE

To maximize the security and performance of the safe, keep Glass Fingerprint Scanner **F clean**

- Use a dry cloth to remove any smudges or prints off the Fingerprint Scanner after use
- Use gentle cleaning agents to clean the safe and Glass Fingerprint Scanner
- Test registered fingerprints and PIN code every 6 months
- Keep liquids away from the control panel. Spills on the control panel will cause damage and possibly electric shock
- Secure safe in a proper area to prevent from falling and causing damage or injury
- DO NOT disassemble the product. For all repairs, contact Viking Security Safe Customer Service



VIKING SECURITY SAFE